



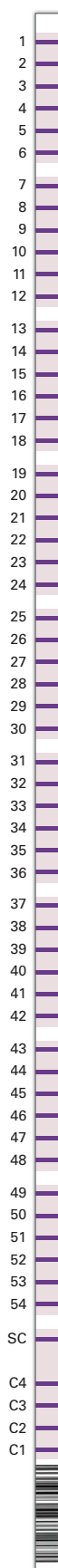
Specific IgG detection for the diagnosis of food intolerances



- Immunoblots with 108 or 216 foods/food additives
- Only small sample volumes required (40 µl for 108 results)
- 2,376 single results after 4.5 hours (parallel analyses of 22 patient samples in one run)
- Fully automatable with the EUROBlotOne system
- 4 calibrators on each strip for semiquantitative results
- Calibrated against the WHO reference serum "1st IRP 67/86"
- 20x less space required than with ELISA: over 2,000 results on a surface equal to that of an ELISA microplate (= 96 results)



EUROLINE-FOOD



EUROLINE-FOOD Profile 216 (DP 3024-0404-1 G)				
Position	EUROLINE-FOOD Profile 108 (DP 3022-0802-1 G)			
	Strip 1	Strip 2	Strip 3	Strip 4
1	Barley flour	Cherry	Carob	Lime
2	Gluten	Grape (white/blue)	Rapeseed	Lychee
3	Oat flour	Kiwi	Duck meat	Mango
4	Rye flour	Lemon	Goat	Papaya
5	Spelt	Nectarine	Goose	Pomegranate
6	Wheat flour	Orange	Ostrich	Raspberry
7	Buckwheat flour	Pineapple	Quail	Rose hip
8	Flax seed	Strawberry	Rabbit	Cantaloupe
9	Corn	Watermelon	Roe deer	Raisin
10	Millet	Pear	Guinea fowl	Anise
11	Rice	Plum	Horse	Bay leaf
12	Beef	Grapefruit	Kefir	Chamomile
13	Chicken	Peach	Beta-Lactoglobulin	Caper
14	Lamb meat	Date fruit	Butter	Chive
15	Pork, cooked	Basil	Camembert	Clove
16	Turkey	Pepper (black/white)	Casein	Coriander
17	Cow milk	Cinnamon	Emmental cheese	Cumin
18	Egg yolk	Garlic	Cottage cheese	Dill
19	Egg white	Mustard seed	Mozzarella	Ginger
20	Goat's cheese	Nutmeg	Processed cheese	Marjoram
21	Goat's milk	Oregano	Curd cheese	Saffron
22	Sheep's milk	Parsley	Bamboo shoots	Sage
23	Sheep's cheese	Peppermint	Brussel sprouts	Cayenne pepper
24	Yogurt	Poppy seed	Cauliflower	Curry
25	Eggplant	Rosemary	Chard	Tarragon
26	Beetroot	Thyme	Chinese cabbage	Hops
27	Bell pepper	Vanilla	Fennel	Mint
28	Broccoli	Almond	Gourd	Brazil nut
29	Carrot	Cashew nut	Jerusalem artichoke	Macadamia nut
30	Celery	Cocoa bean	Kale	Pine nut
31	Chili	Hazelnut	Radish	Chestnut
32	Cucumber	Peanut	Savoy cabbage	Cola nut
33	Horseradish	Pistachio	Sweet potato	Carp
34	Leek	Sesame	Vine leave	Squid
35	Olive	Sunflower seed	White cabbage	Eel
36	Onion	Walnut	Shallot	Gilthead seabream
37	Potato	Coconut	Liquorice root	Haddock
38	Red cabbage	Mushroom mixture 1*	Snow pea	Pike
39	Tomato	Mushroom mixture 2*	Broad bean	Turbot
40	Turnip	Crayfish	Chickpea	Herring
41	Zucchini	Salmon	Mung bean	Lobster
42	Artichoke	Tuna	Kidney bean	Mackerel
43	Asparagus	Clam	Chicory	Octopus
44	Spinach	Prawn	Iceberg lettuce	Oyster
45	String bean	Anchovy	Rocket	Sardine
46	Pea	Swordfish	Avocado	Ocean perch
47	Soya bean	Trout	Blackberry	Sea bass
48	Lentil	Sole	Blueberry	Caviar
49	White bean	Codfish	Cranberry	Crab
50	Lettuce	Brewer's yeast	Red currant	Agar-agar
51	Corn salad	Baker's yeast	Black currant	Aloe vera
52	Apple	Honey	Fig	Green tea
53	Apricot	Coffee	Gooseberry	Baking powder
54	Banana	Black tea	Honeydew melon	Safflower oil
SC	Serum control band	Serum control band	Serum control band	Serum control band
C4	Calibrator 4	Calibrator 4	Calibrator 4	Calibrator 4
C3	Calibrator 3	Calibrator 3	Calibrator 3	Calibrator 3
C2	Calibrator 2	Calibrator 2	Calibrator 2	Calibrator 2
C1	Calibrator 1	Calibrator 1	Calibrator 1	Calibrator 1

*Mushroom mixture 1: Oyster mushroom, White mushroom, Shiitake, Chanterelle; Mushroom mixture 2: Bay Boletus, Boletus

DP 3024-0404-1 G Detection of IgG against 216 foods and food additives (test kit contains 16 strips for 4 patient samples)
DP 3024-0404-2 G similar to DP 3024-0404-1 G, but without pork extract (→ 215 foods and food additives)

DP 3022-0802-1 G Detection of IgG against 108 foods and food additives (test kit contains 16 strips for 8 patient samples)
DP 3022-0802-2 G similar to DP 3022-0802-1 G, but without pork extract (→ 107 foods and food additives)